

DRAWING NUMBER
20-73

DRAWING NUMBER

DRAWING NUMBER

DRAWING NUMBER

THOMAS SUBDIVISION

LAKE HARBOR, FLORIDA

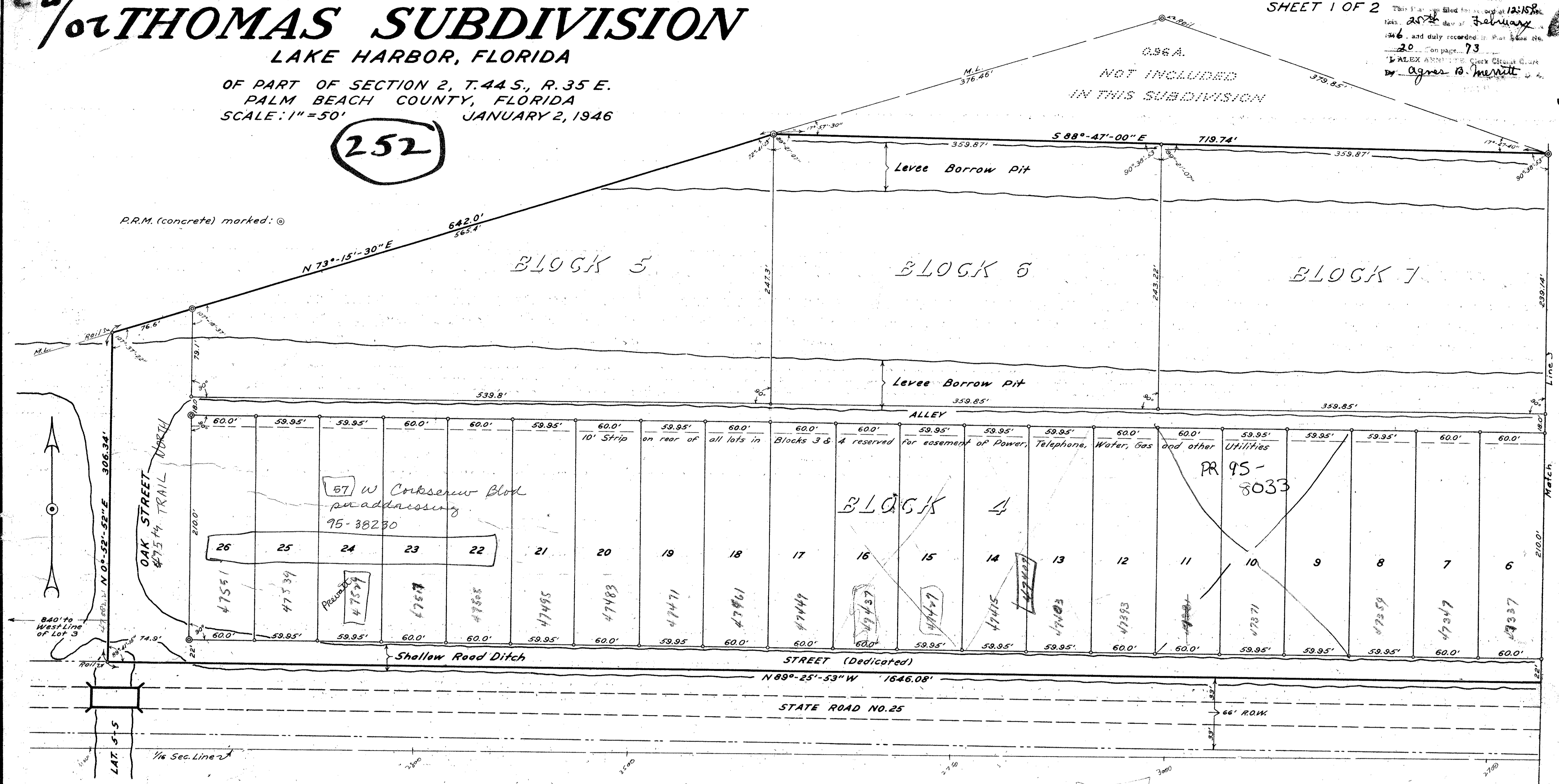
OF PART OF SECTION 2, T.44 S., R.35 E.
PALM BEACH COUNTY, FLORIDA
SCALE: 1"=50' JANUARY 2, 1946

252

SHEET 1 OF 2

STATE OF FLORIDA
COUNTY OF PALM BEACH
This Plan was filed for record at 12:15 P.M.
this 20th day of February
1946, and duly recorded in Public Case No.
20 on page 73
ALEX. B. MERRITT, Clerk Circuit Court
by Agnes B. Merritt

20/73



DESCRIPTION

From the railroad rail monument marking the East quarter section corner, Section 2, Township 44 South, Range 35 East, run N 0°-37'-04" E along the East line of said Section 2, a distance of 1320.24 feet to the Southeast corner of Lot 1, State Survey of that section; thence run N 89°-40'-02" W along the South line of Lot 1, a distance of 816.48 feet, more or less, to the intersection with the West right of way line of Everglades Drainage District's Miami Canal, said point of intersection being 329 feet southerly along the canal right of way from a railroad rail monument; thence run N 7°-24'-56" E along the West right of way line of Miami Canal, a distance of 63.75 feet to the North right of way line of State Road No. 25, being the point of beginning of the parcel herein described.

From the point of beginning, run N 89°-25'-53" W along the North right of way line of State Road No. 25, a distance of 544.73 feet, more or less, to a railroad rail monument; thence N 0°-42'-20" E a distance of 150.0 feet to a 2" iron pipe; thence N 89°-25'-53" W a distance of 100.0 feet to a 2" iron pipe; thence S 0°-42'-20" W a distance of 150.0 feet to a railroad rail monument on the North right of way line of State Road No. 25; thence N 89°-25'-53" W along said right of way line a distance of 1646.08 feet, more or less, to a railroad rail monument located 840.0 feet East of the West line of Lot 3, State Survey; thence N 0°-52'-52" E along a line 840.0 feet East of and parallel with the West line of Lot 3, a distance of 306.34 feet, more or less, to a railroad rail monument on the Lake Okeechobee meander line of said Section 2; thence N 73°-15'-30" E along said meander line, a distance of 642.0 feet, more or less, to a concrete monument; thence S 88°-47'-00" E a distance of 719.74 feet to a concrete monument on the Lake Okeechobee meander line of said Section 2; thence S 70°-59'-20" E along said meander line a distance of 756.2 feet, more or less, to meander corner No. 25; thence S 52°-43'-25" W, a distance of 23.5 feet, more or less, to a 1/2" iron pipe; thence S 88°-32'-45" E, a distance of 285.47 feet, more or less, to a railroad rail monument on the West right of way line of Miami Canal; thence S 7°-24'-56" W along said West right of way line, a distance of 232.83 feet to the point of beginning.

The parcel hereinabove contains 20.90 acres, more or less.

816.48
544.73
100.00
1646.08
3107.24
840.00
3947.24

St. NAME:
Old US 27

RM

DEDICATION

1000-661

KNOW ALL MEN BY THESE PRESENTS, that C.A. Thomas and his wife, Virginia Thomas, the owners in fee simple of the hereon described lands have caused this plat of Thomas' Subdivision to be made and do hereby dedicate to the perpetual use of the public all streets, alleys and/or avenues shown hereon provided that such streets, alleys and/or avenues shall revert unto themselves, their heirs, assigns or successors in the event such streets, alleys and/or avenues are vacated, abandoned or otherwise cease to be used as public thoroughfares or are discontinued by law.

IN WITNESS WHEREOF, the owners have hereunto set their hands and seals upon this 14th day of February A.D. 1946.

WITNESS Madge Ufford C. A. Thomas SEAL
WITNESS H. L. Fitzgerald Virginia Thomas SEAL

20/73

20/73

20/73